

Driving Directions to Our Office

1. From I-80 traveling east (from Sacramento, Davis, Bay Area)

Follow I-80 toward Sacramento. After crossing the Yolo Causeway, stay right and take the Reno/Roseville Exit. Remain on I-80 and exit Douglas Boulevard East. Travel southeast (toward Folsom Lake) for about 5 miles. Turn right on Sierra College Boulevard. Pass *through* Eureka Road intersection (you will see “Granite Bay Pavilions” on your left) and turn left through median entrance into Granite Bay Pavilions Business Park. **#9269 is located straight to the back.**

2. From I-80 traveling west (from Auburn, Grass Valley, Reno)

Follow I-80 toward Roseville/Sacramento. Exit Sierra College Blvd and turn left at the light. Continue on Sierra College Boulevard for about 5 miles. Cross the Eureka Road intersection (you will see “Granite Bay Pavilions” on your left) and turn left through median left turn entrance into Granite Bay Pavilions Business Park. **#9269 is located straight to the back.**

3. From Highway 99 or 70 traveling south (from Yuba City, Marysville, Chico, Paradise, Lincoln)

From Hwy 99: Turn left on Hwy 20 east to Marysville. Turn right onto Hwy 70 south.

From Hwy 70: Merge onto Hwy 65 south and follow thru Rocklin.

Merge onto I-80 west - exit Douglas Boulevard and travel southeast (toward Folsom Lake) for about 5 miles; turn right on Sierra College Boulevard; cross the Eureka Road intersection (you will see “Granite Bay Pavilions” on your left) and turn left through median entrance into Granite Bay Pavilions Business Park. **#9269 is located straight to the back.**

4. From Highway 50 traveling east (Carmichael, Rancho Cordova)

Exit Hazel Avenue – travel north. Pass *through* Old Auburn Road and East Roseville Parkway (**Hazel Avenue becomes Sierra College Boulevard**), then turn right into Granite Bay Pavilions Business Park. **#9269 is located straight to the back.** *If you cross the Eureka Road intersection, you have gone too far.

5. From Highway 50 traveling west (from Folsom, Placerville, Pollock Pines)

Exit Folsom Boulevard north. It will turn into Auburn-Folsom Road. Follow to Douglas Boulevard and turn left. Go about 5 miles and turn left on Sierra College Boulevard. Cross the Eureka Road intersection (you will see “Granite Bay Pavilions” on your left) and turn left through median entrance into Granite Bay Pavilions Business Park. **#9269 is located straight to the back.**

6. From I-5 and Highway 99 traveling north (from Stockton, Lodi, Sonora)

From I-5: Cross the Capitol City Freeway and merge onto I-80 East toward Reno.

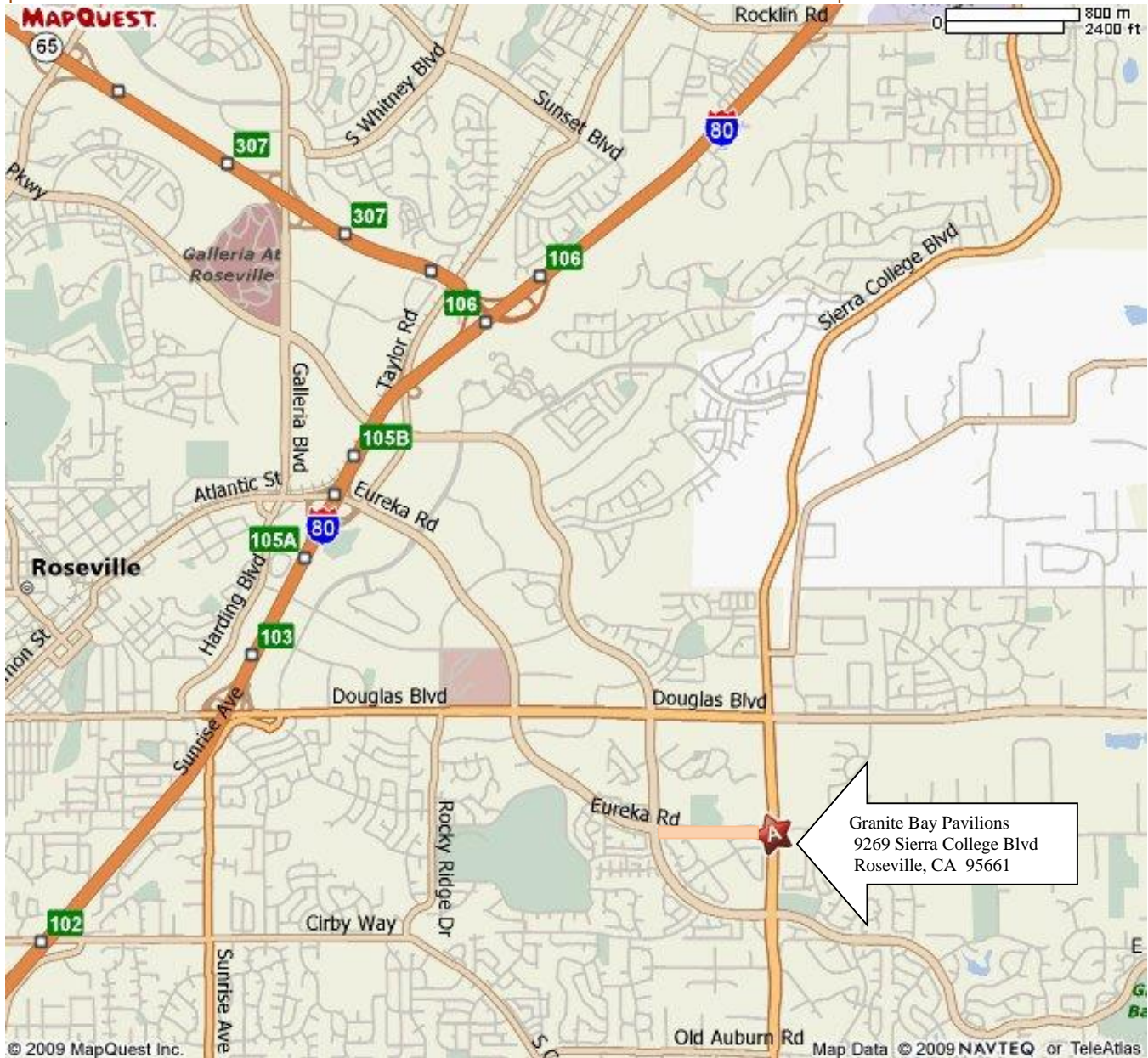
From Hwy 99: Remain on 99 as it becomes Cap City Freeway. Merge onto I-80 east toward Reno. Exit Douglas Boulevard East in Roseville and travel southeast (toward Folsom Lake) for about 5 miles. Turn right on Sierra College Boulevard. Cross the Eureka Road intersection (you will see “Granite Bay Pavilions” on your left) and turn left through median entrance into Granite Bay Pavilions Business Park. **#9269 is located straight to the back.**

7. From I-5 traveling South (from Redding, Red Bluff, Eureka)

Travel toward Sacramento and merge onto I-80 eastbound toward Reno. Exit Douglas Boulevard East in Roseville and follow about 5 miles to Sierra College Blvd. Turn right on Sierra College Boulevard. Cross the Eureka Road intersection (you will see “Granite Bay Pavilions” on your left) and turn left through median entrance into Granite Bay Pavilions Business Park. **#9269 is located straight to the back.**

↑ Towards Lincoln

↑ Towards Reno



↓ Towards Sacramento

↓ Towards 50 and Folsom

Our office is located in the Granite Bay Pavilion complex. It is on the Southeast corner of Sierra College Blvd. and Eureka Road. Our building is towards the rear of the Pavilions center. **Our address is not visible from the street.**

California Skin Surgery Center
Gregory M. Bricca, M.D., Inc.
9269 Sierra College Boulevard
Roseville, CA 95661
Office (916) 772-1585